



QUEEN'S PARK HIGH SCHOOL



Prospectus

"Pupils enjoy coming to school"

Ofsted 2020

Inspiring Individuals • Empowering Minds • Defining Futures



Queen's Park High School announced 'Secondary School of the Year' at the Standard Education Awards 2024.

The Standard EDUCATION AWARDS 2024
CELEBRATING SUCCESS
Powered by Excell. supply

Secondary School of the Year WINNER
Queen's Park High School



"The headteacher and governors are ambitious for all pupils."
 Ofsted 2020



Welcome

I would like to wish you a warm welcome to Queen's Park High School, an academy within The Learning Trust, in the heart of Chester. We work in partnership with Christleton High School, Chester International School (CIS) and Belgrave Primary School to serve young people, to educate, enlighten and give them the expertise and confidence to succeed.

Our expectations in terms of achievement and behaviour are very high. If our students are to reach their full potential as responsible citizens, we believe there has to be a culture of mutual respect, honesty and understanding; a culture which is at the heart of our school community.

We have hard-working, committed and dedicated staff, who regularly go above and beyond, to ensure that all our students enjoy their learning, feel safe and are able to achieve to their full potential.

As Headteacher, I too, am committed to nurturing, motivating and inspiring all individuals to recognise their worth, to develop their self-belief and to strive to achieve their aspirations and goals. I feel very privileged to be able to work with young people who endlessly impress me with their talents, skills and contributions both within and beyond the classroom.

In January 2020 we received our first full inspection as a new academy since our conversion back in 2017. We are extremely proud that we are now officially

rated as a 'GOOD' school. Whilst we felt very strongly that this was the case, this judgement brings welcome recognition and validation of all the hard work which has taken place across the school over recent years. Our school is brimming with the potential for future excellence, which I know will flourish as we continue our exciting journey. We would be delighted to welcome you to join us as we strive to become an 'outstanding' school in the near future.

I hope that this prospectus gives you a flavour of the many qualities and strengths of our school. As a prospective parent, carer or student, I would like to encourage you to come and visit us during the school day, so that you can experience these for yourself and find out more about our school. Please do not hesitate to phone or e-mail us to arrange a visit. We look forward to welcoming you to Queen's Park High School very soon.

Tom Kearns
 Mr Tom Kearns
Headteacher



"Leaders and staff have high expectations of all pupils."
Ofsted 2020

Our Vision

As a school, Queen's Park High has ambitious outcomes for all its students and we aim to provide the very best learning and personal development opportunities for every young person that we serve. Our vision is founded upon the following principles:

- *Inspiring Individuals*
- *Empowering Minds*
- *Defining Futures*

Inspiring Individuals

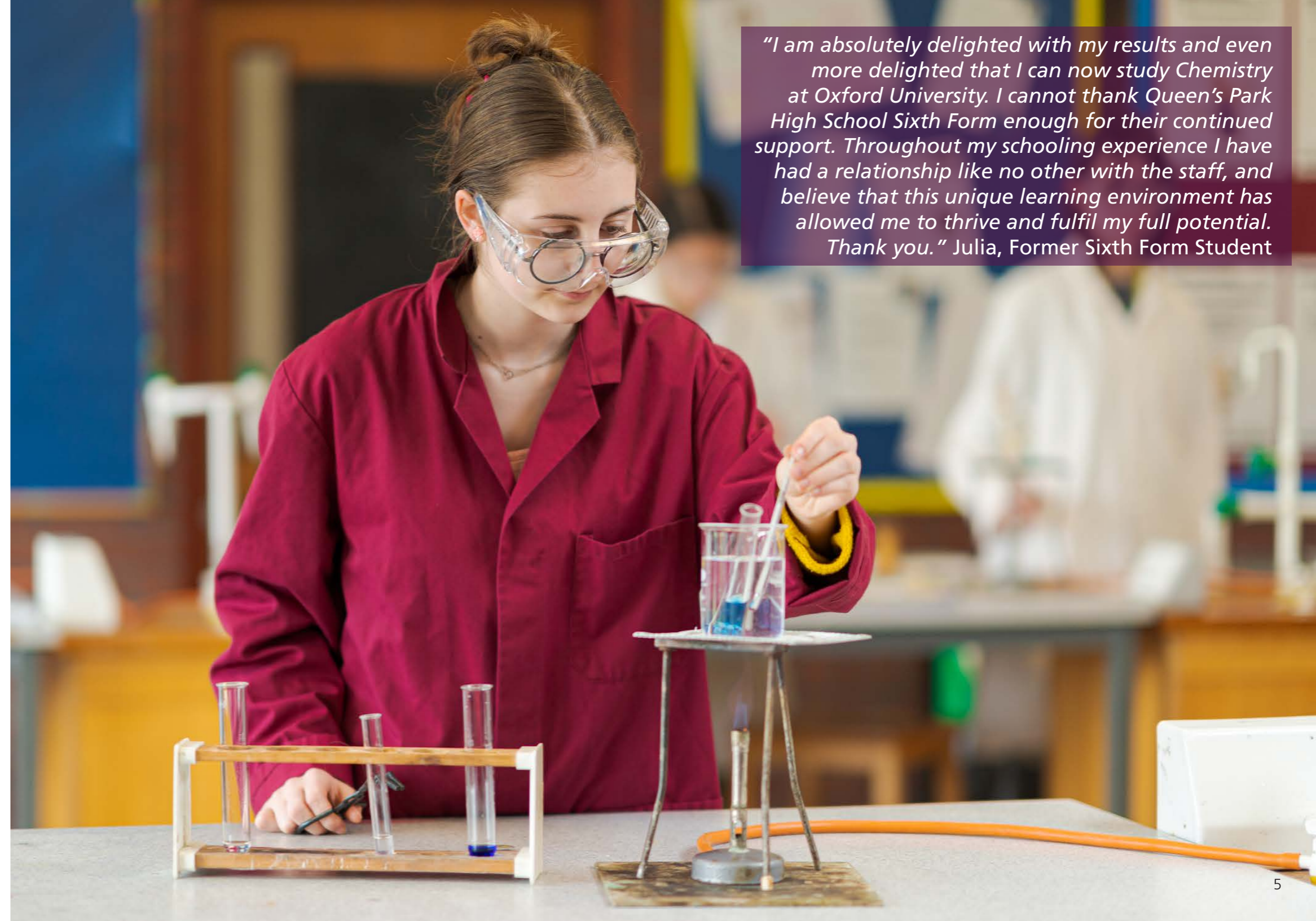
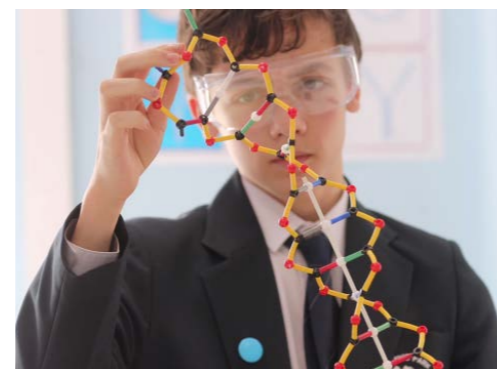
We value the uniqueness of everyone in our school, and we have committed to make excellence in teaching the core value of our school, so that all members of our community are inspired to learn and achieve.

Empowering Minds

We believe that everyone has ideas to share, aspirations to realise, and opinions that matter. It is our mission to liberate young people to think freely, without constraint and beyond limits.

Defining Futures

In all that we do, we are guided by the knowledge that the foundations of every young person's tomorrow are laid today. By achieving excellence in all that we do, we aim to make today's young people tomorrow's era defining leaders, thinkers and pioneers.



"I am absolutely delighted with my results and even more delighted that I can now study Chemistry at Oxford University. I cannot thank Queen's Park High School Sixth Form enough for their continued support. Throughout my schooling experience I have had a relationship like no other with the staff, and believe that this unique learning environment has allowed me to thrive and fulfil my full potential. Thank you." Julia, Former Sixth Form Student

"At Queen's Park High School, all students are encouraged to do their best. I settled in really quickly, made lots of friends and all the teachers are so lovely. It's a really nice place to be."

Oscar, Year 9 Student



Taking the Next Step

Moving to high school is an exciting time but we know it can be a bit daunting for children (and their parents!).

Our staff are friendly and approachable and will work with you to ensure that the transition is as smooth as possible.

We have strong links with our partner primary schools and also welcome a large number of children from across the Chester area. The projects we work on with Year 5 and Year 6 children give us the opportunity to build up a picture of your child as an individual. We get to know their strengths, aptitudes and preferred way of learning long before they join us in Year 7.

When starting at Queen's Park High School, your child will be placed both within a tutor group and also one of our three Houses, Eaton, Grosvenor and Westminster. The House system provides opportunities to unlock our students' potential, through leadership roles, house competitions and peer to peer support programme. When your child joins us we want them to feel safe and happy as we know this is the best way for them to achieve success. The size of our school allows us to meet our commitment to get to know each of our students personally and to ensure that they get the support they need to become active and integral members of our school community.

"The children at Belgrave benefit from excellent liaisons with Queen's Park High School; taking part in a range of exciting and inspirational projects and experiences which enable pupils to have a smooth transition on to secondary school."

Juliette Benton, Headteacher, Belgrave Primary School



"The best thing about Sports Camp was learning to play lots of sports like tennis, table tennis, dodgeball, football and lots more. Also, all the teachers were really nice. I would really like to come to Queens' Park High School when I'm older."

Devon, Year 5 Student



Our Curriculum

The curriculum at Queen's Park High School is founded upon our vision: 'Inspiring Individuals, Empowering Minds, Defining Futures.'

We want all of our students to be able to experience an innovative and dynamic curriculum that prepares them to take their place in the world of work as articulate, literate and confident adults. We provide a broad and balanced curriculum so that all students can discover their passion by showing them the best that has been written, thought and said in every subject. Full details about our curriculum can be found on our website.

Key Stage 3

During years 7 to 9 students will be taught in ability sets in the core subjects of English, maths and science. They follow a broad and balanced curriculum including subjects such as: art, drama, geography, history, ICT, music, PE, RE, Spanish and technology. These foundation subjects are taught in mixed ability sets to foster a sense of co-operation and collaboration between students. Assessment points are carefully planned to ensure that KS3 prepares students in the best way possible for the start of their GCSE courses. There is a well-developed and comprehensive guidance programme around our guided choices in Year 9. Students and parents are well informed, supported and consulted to ensure the right choices are made by each individual student to enable them to be successful in their GCSEs.



"Behaviour is good."
Ofsted 2020



"Leaders want pupils to become well-rounded individuals who understand the wider world."
Ofsted 2020



“Relationships between staff and pupils are positive and respectful.”
Ofsted 2020

Inspiring, Empowering, Defining

Key Stage 4

At Key Stage 4 (Years 10 and 11), students have carefully completed their option choices. We offer a wide range of GCSE qualifications well suited to students' interests and aspirations. We offer all the EBacc subjects of: geography, history, French and Spanish. This is in addition to the prescribed core curriculum of English, English Literature, maths, PE, RE and science (including the option of separate GCSEs in biology, chemistry and physics). Additionally, students can choose from a wide range of other options, including: art, 3D design, design & technology, computer science, drama, food technology, health & social care, music, photography, RE, sports studies and triple science. Students are taught in ability groups in core subjects.

Key Stage 5

At Key Stage 5 (Years 12 and 13) the majority of our students choose to continue their studies here in the Sixth Form once they have completed Year 11. Alternatively, we support students to move on to full time college places or to take up an apprenticeship within the local or surrounding areas.

We have a strong track record in preparing students for Higher Education and our Key Stage 5 curriculum offers a wide range of courses at Level 3 including traditional A Levels, alongside vocational and BTEC courses in a variety of subjects.

If you would like further information about Queen's Park High School's Sixth Form, please visit our website or request a copy of our Sixth Form prospectus.

“I had a brilliant morning and learned a lot during the medical careers event. I definitely want to be a surgeon and enjoyed practising keyhole surgery. I now know exactly what grades I need to achieve my goal.”
Matt, Year 11 Student





"QPHS is going from strength to strength and it's not just a school, but a vibrant community with a real sense of belonging - whether in the classroom, at the rowing club or on stage. The teachers seem to notice each child's unique strengths, in and out of the classroom, then create opportunities for them to learn, develop skills and grow in confidence. Choosing QPHS has been one of our best decisions!"

Year 9 Parent

Beyond the Curriculum

Working beyond the curriculum we aim to inspire, empower and define students who strive to excel in all subjects and who wish to improve their academic profile.

This is achieved through bespoke options for students. Opportunities include: visits, online courses, guest speakers, links with universities and subject challenges.

Enhanced Curriculum

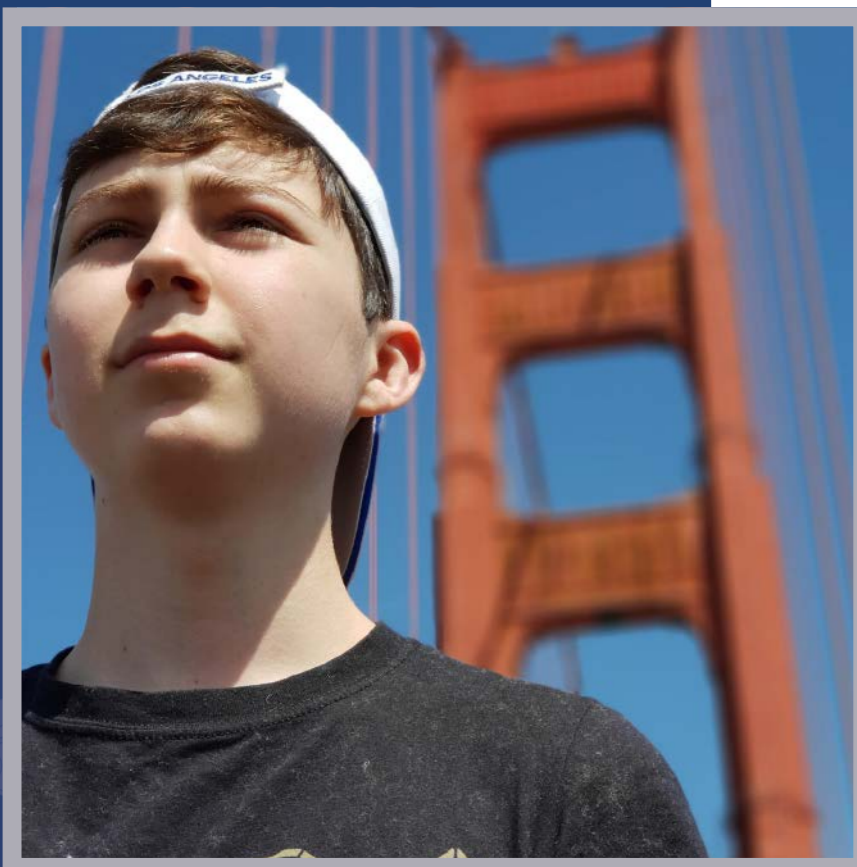
Personal Development and extra-curricular is central to our culture of strong relationships between staff and students.

At Queen's Park High School, we offer an extensive extra-curricular programme designed to enrich students' experience by providing the opportunity for them to make new friends, find new interests and develop new and existing skills.

We offer a wide range of activities many of which take place at lunchtimes throughout the week or after school. These are reviewed and updated each term to make our provision as diverse and inclusive as possible.



"Queen's Park High School is the first school in the country to receive the Gold STEM Club Quality Mark. This is the highest award to recognise the exceptional STEM provision on offer for students."



West Coast Trip
"It was an absolutely amazing opportunity. My favourite part was visiting Alcatraz – it was so interesting to discover how people spent their lives living on that island in such confinement."

Claudia, Year 12 Student

Creative Curriculum

Perhaps the highlight of our performing arts' calendar is the annual school production. With over 20% of the school population involved it is clear to see how this popular extra-curricular opportunity is as successful as it is.

With students auditioning for roles from September, the six-month process challenges everyone involved to work incredibly hard as a member of a highly motivated and successful team which involves students from Year 7 right the way through to Year 13.

Students who are interested in the technical and backstage aspects of the production begin their work in October, with a range of opportunities available making use of our professional theatre equipment. Previous productions include: Les Misérables, Disco Inferno, Little Shop of Horrors, Rock of Ages, School of Rock, Grease, We Will Rock You, Billy Elliot and most recently Popstars, The 90's Musical.

In addition, students from all years have the opportunity to experience the arts internationally with recent trips to Ghana, Valencia, Colombia, West Coast America and New York enriching our curriculum.

- Further extra-curricular performing arts activities include:
- National Theatre Connections Project
 - Queen's Park Radio Station
 - The Rock Band and Wind Band
 - Keyboard Club and Composition Club
 - The V Factor
 - Christmas Concert
 - Various performances locally including Storyhouse and local residential homes

"Pupils take part in many activities, which help to develop their confidence and resilience."

Ofsted 2020

National Theatre CONNECTIONS 2024

"Queen's Park High School was selected from over 250 theatre groups across the UK to perform at the National Theatre in London, as part of this year's National Theatre Connections Festival, celebrating young talent."





"We learn a lot about working together in teams and challenging ourselves to do things we didn't always think we could."
Annabel, Year 9 Student

Enrichment

We know the best possible school experience for your child offers learning and experiences beyond the academic.

At Queen's Park High School, we offer a wide range of extra-curricular activities, including sport, recreational and the performing arts, many of which take place at lunchtimes or after school.

Examples of the clubs and enrichment activities we run are:

- Art Club
- Book Loving Tuesday
- Chess Club
- Coding
- Debate Club
- Duke of Edinburgh
- Dungeons and Dragons
- Food Club
- French Pen Pal Club
- Gaming Club
- Gardening Club
- ICT Club
- LGBTQ+ Society
- Journalism
- Meditation
- Robotics
- Spanish Spelling Bee
- STEM Club
- Warhammer Club



Enrichment – Sport

We have a strong track record of sporting success.

In addition to the usual PE Curriculum, sporting activities include:

- Basketball (girls & boys)
- Cricket
- Dodgeball
- Football (girls & boys)
- Indoor Rowing (in the fitness suite)
- Outdoor Rowing (on the River Dee)
- Rounders
- Rugby
- Table Tennis
- Tennis
- Year 7 Learn to Row programme

Rowing at Queen's Park High School

We are one of only 4 state schools in the country affiliated with a Rowing Club. Queen's Park Rowing Club compete at both national and international level.

Over the years a number of rowers have been invited to join the Olympic GB training camp. In 2022 a former student became World GB Silver Medallist and last year two students were selected to represent Wales in the Under 19 Welsh rowing squad.

Dry activities take place in our specialist fitness suite with water-based activities taking place throughout the week all year round.



"The Rowing Club is part of the fibre of the school and the community; our students, parents, coaches, staff and the committee ensure we continue to provide rowing to all students who join Queen's Park High School. Rowing enables students to develop resilience, a team ethos and discipline that positions them for successful outcomes."

Kayte Parlevliet, Parent and Volunteer Coach



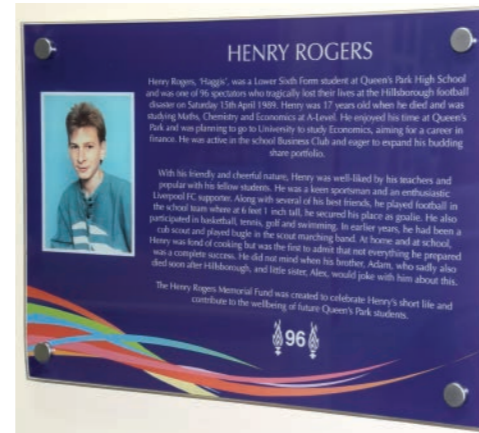


The Henry Rogers Sixth Form Centre

Henry was in the Sixth Form at Queen's Park High School when he tragically lost his life at the Hillsborough disaster over 30 years ago.

Shortly after that his family set up the Henry Rogers Memorial Fund to support students at the school in memory of their son.

Within the Henry Rogers Sixth Form Centre there are facilities to enable students to revise, refresh and relax. This includes a bespoke Sixth Form 'Beach' café. Additionally, Sixth Formers have their own designated area within the school library which is equipped with a suite of computers. Entrance to the Sixth Form Centre is by electronically coded door lock, allowing our Sixth Formers to enter and exit the building at their convenience, whilst simultaneously keeping the building secure.



"The centre has captured a truly comfortable and yet purposeful atmosphere. We are delighted that this is a lasting legacy and will benefit the students in a positive way for many years to come."

Mr Rogers



"Sixth Form students are excellent role models for younger students."

Ofsted 2020



Partnership with Parents

Our highest priority is to ensure that students are happy, safe and supported in school and we can only achieve this through a close partnership with parents and carers.

We recognise the importance of excellent communication between home and school to encourage closer links and better understanding. This is facilitated through Parents' Evenings, the school website, newsletters, e-mails, text messages and social media. As a result of this Queen's Park High School was announced winner of the Communication Award at the Trinity Mirror Cheshire Schools Awards.

If you need to speak to a member of staff about your child, then generally your child's Group Tutor should be your first point of contact. Your child's Group Tutor is the key person they can ask for help and advice and is the main link between home and school. You will get to know your child's Group Tutor through our Review Day/Evening alongside regular Parents' Evenings and other whole school events. Your child's Head of Year may also be able to support you further should this be needed.

All parents can access real time student data online through School Synergy, including registers, homework assignments and assessment information. We encourage our parents to access this information and discuss regularly with their child how things are progressing in school. You will also receive information about your child's assessment grades each term and a summative report annually.

In addition to information about your child, you can also keep up to date with school life at Queen's Park via our school website, our termly newsletters and our Twitter, Facebook and Instagram social media accounts.

The school also has a very committed Parent Teacher Association (PTA) which actively supports both the school and our students. Every parent is automatically a member of the association when their child joins the school, so please be encouraged to get involved.



"Our boys have flourished at QPHS. They have been taught to the highest academic standards as demonstrated by their excellent exam results and have been supported to learn, in a style that suited them individually, by teachers who know and care about them. They have been inspired and given confidence to go for careers in Physics and Medicine. What has impressed us as much as their academic success is the young men they have become. A focus on inclusivity and opportunities in leadership, social skills, team working, debating and wellbeing that QPHS encourages has developed well rounded, self-determining and resilient individuals, confident in their own ideas and opinions but with a healthy respect for others and their differences. They feel known, appreciated and part of the QPHS team. This is what has made their education at QPHS so valuable."

Drs Dan and Nina Jones, Parents of Angus and Rory

How to Find and Contact Us

"The atmosphere in the school is calm and welcoming."

Ofsted 2020

Come and visit us to find out more:

- 01244 257088
- enquiries@qphs.co.uk
- www.qphs.co.uk
- @qphschester
- QPHS Chester
- @qphschester



Queen's Park High School
Queens Park Road
Chester CH4 7AE



"I'm so happy I chose to send my daughter to Queen's Park High, she's had a wonderful year and has thoroughly enjoyed her enrichment week - just a brilliant school!"

Year 7 Parent